

# SpectraCal

---

## Firmware Update Procedure for VideoForge PRO ver. 1.11



VideoForge PRO

Document Rev. 1.11

## Materials Needed

---

- VideoForge PRO generator
- VideoForge PRO power adapter
- USB cable (USB-A to Mini-USB)
- Windows computer to run firmware update
- HDMI cable
- Display with available HDMI input
- VF Pro 1.11.zip

## Contents of “VF Pro 1.11.zip”

---

- Firmware Update procedure
- ISP Six-G V1.612.exe
- SG01H-H22-115-FPGA-V110.bin (223F).bin
- SG01H-H22-115-LCDP-V1.10(CA67).bin (thumbnail.bin)
- SG01H-H22-115-V1.11(3F7A).hex
- FlyMcu Folder
  - FlyMcu.exe
  - ProgramLogs.txt

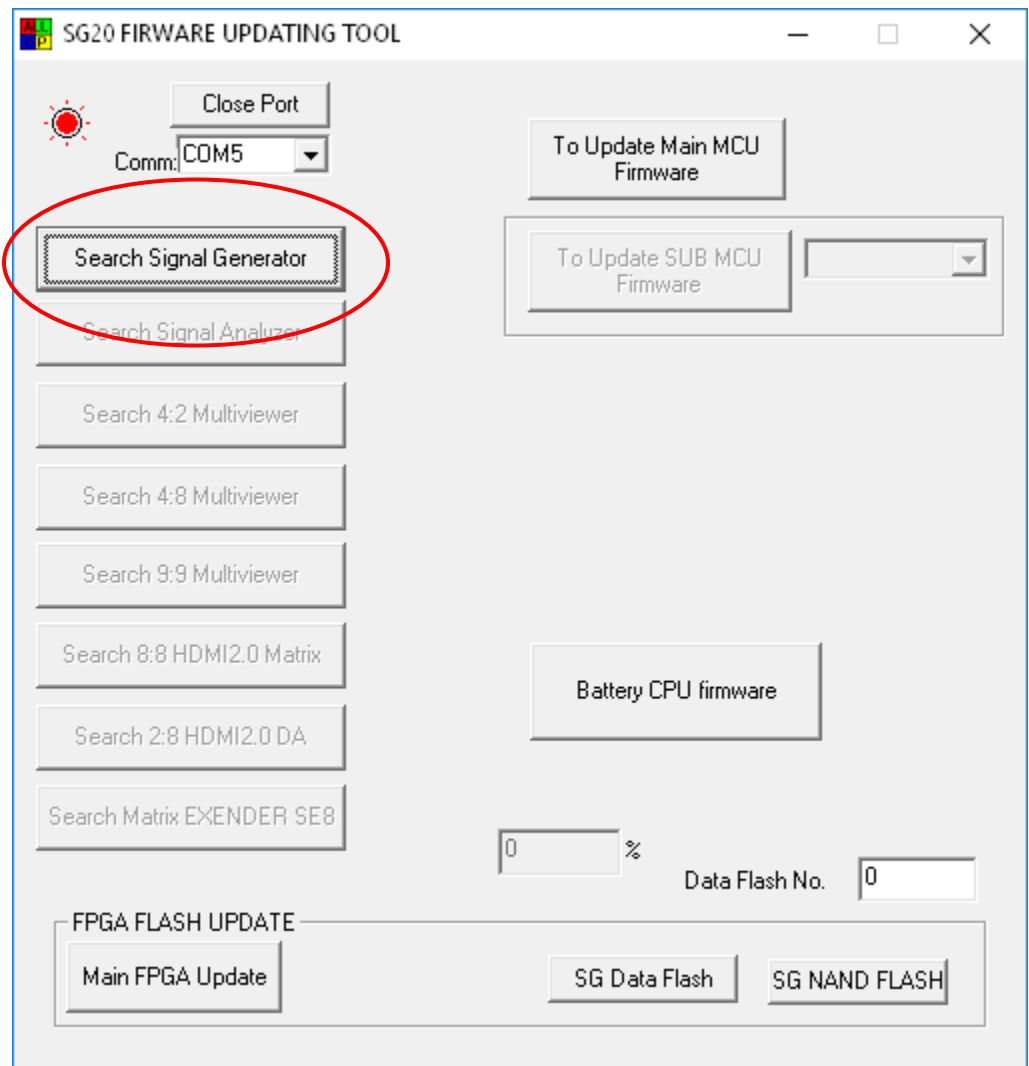
## Initial Setup

---

1. Unzip (extract) the “VF Pro 1.11.zip” file.
2. Connect the VideoForge PRO power adapter to the unit and to AC power.
3. Connect the VideoForge PRO to the computer via USB cable.
4. Connect the VideoForge PRO to a display via HDMI cable.
5. Power on the VideoForge PRO.

## VideoForge PRO Connection

1. Run the “ISP Six-G V1.612.exe” file from your extracted folder.
2. Comm: Select the port number identified in Device Manager under Ports (COM & LPT) > USB Serial Port (COMx).
3. Click the “**Search Signal Generator**” button.
4. Connection is successful when the light is **red**, as shown below.



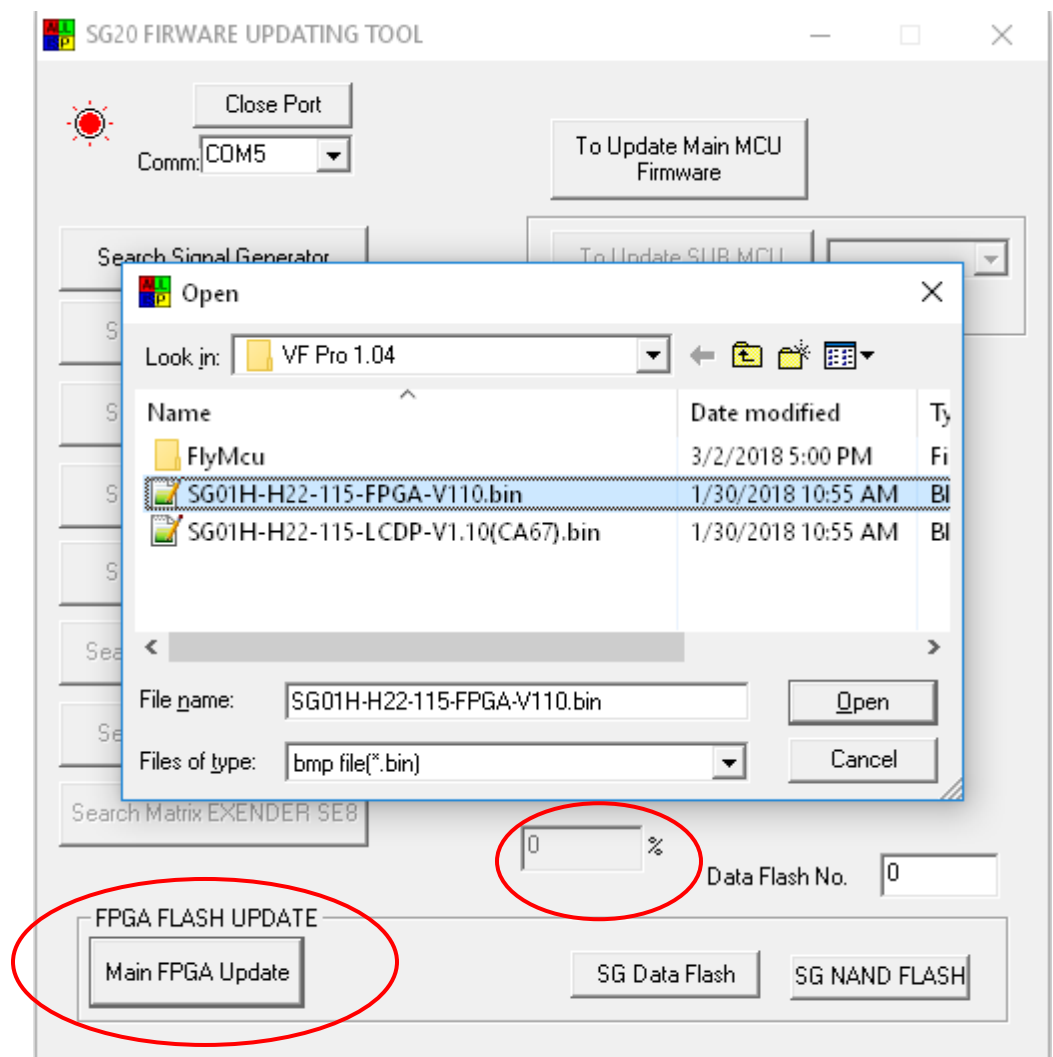
## Update Main FPGA (PART 1 of 3) (Skip if your unit has already been updated to FW 1.04 or later)

**NOTE:** Skip this section if your unit has already been updated to FW 1.04

1. Click the “Main FPGA Update” button (as indicated below).
2. Select the “SG01H-H22-115-FPGA-V110.bin” file, then click “Open.”

*Caution: Do not interrupt power or USB connection to the VideoForge PRO during this process.*

3. When the progress box reaches 100%, wait 10 seconds longer.
4. **Close the firmware updating software before continuing to PART 2 (You will reopen for PART 2).**
5. **Power cycle the VideoForge PRO. [IMPORTANT]**



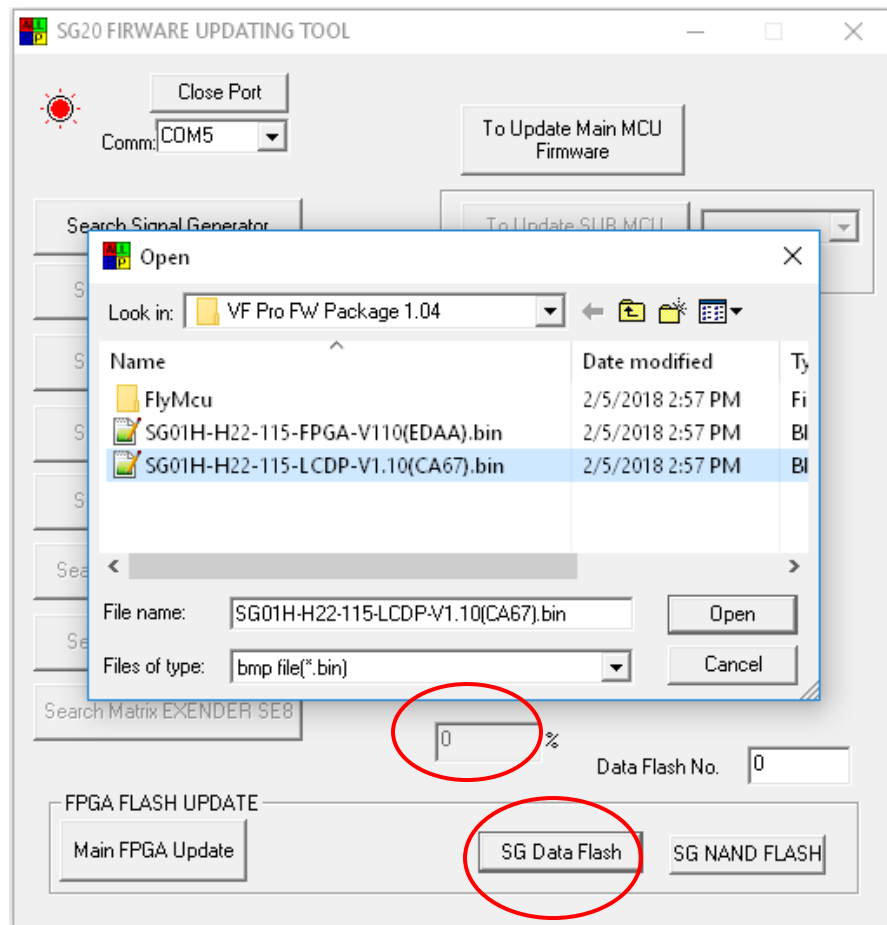
## Update SG Flash Data (PART 2 of 3) (Skip if your unit has already been updated to FW 1.04 or later)

**NOTE:** Skip this section if your unit has already been updated to FW 1.04

1. Open the “ISP Six-G V1.612.exe” file again and connect to the VideoForge PRO, as shown on page 3, above.
2. Click the “SG Data Flash” button (as shown below).
3. Select the “SG01H-H22-115-LCDP-V1.10(CA67).bin” file, then click “Open”

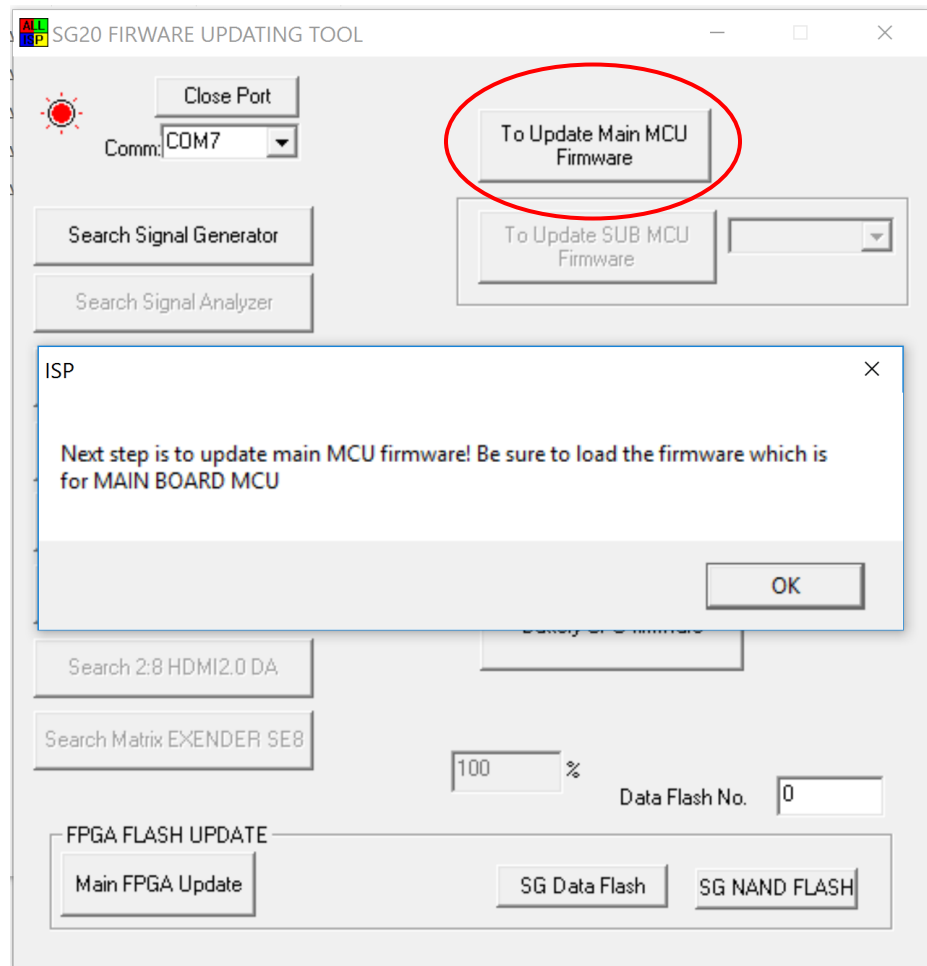
*Caution: Do not interrupt power or USB connection to the VideoForge PRO during this process.*

4. When the progress box reaches 100%, wait 10 seconds longer.
5. **Close the firmware updating software before continuing to PART 3 (You will reopen for PART 3).**
6. **Power cycle the VideoForge PRO. [IMPORTANT]**



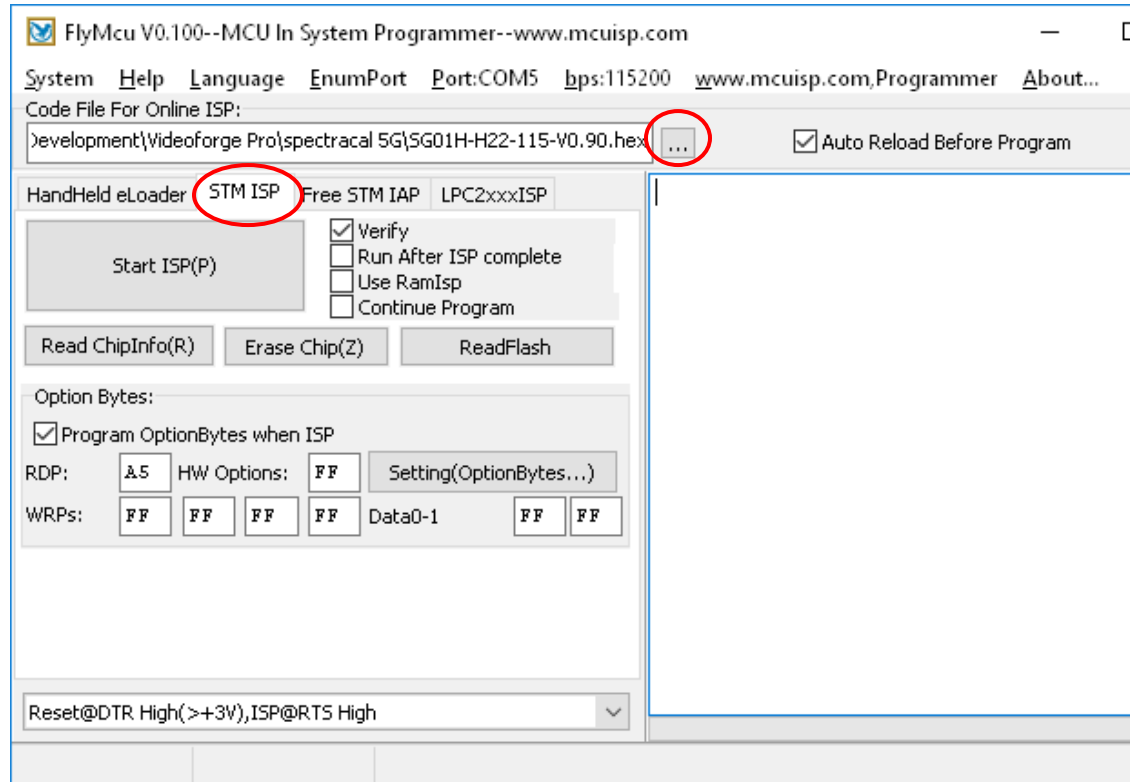
## Update Main MCU Firmware (PART 3 of 3) (Update to FW 1.11 in this step)

1. Open the “ISP Six-G V1.612.exe” file again and connect to the VideoForge PRO, as shown on page 3, above.
2. Click the “**To Update Main MCU Firmware**” button (as shown below).
3. Click “**OK**” on the popup dialog (may be a 30-60 sec. wait for the FlyMcu screen to load).



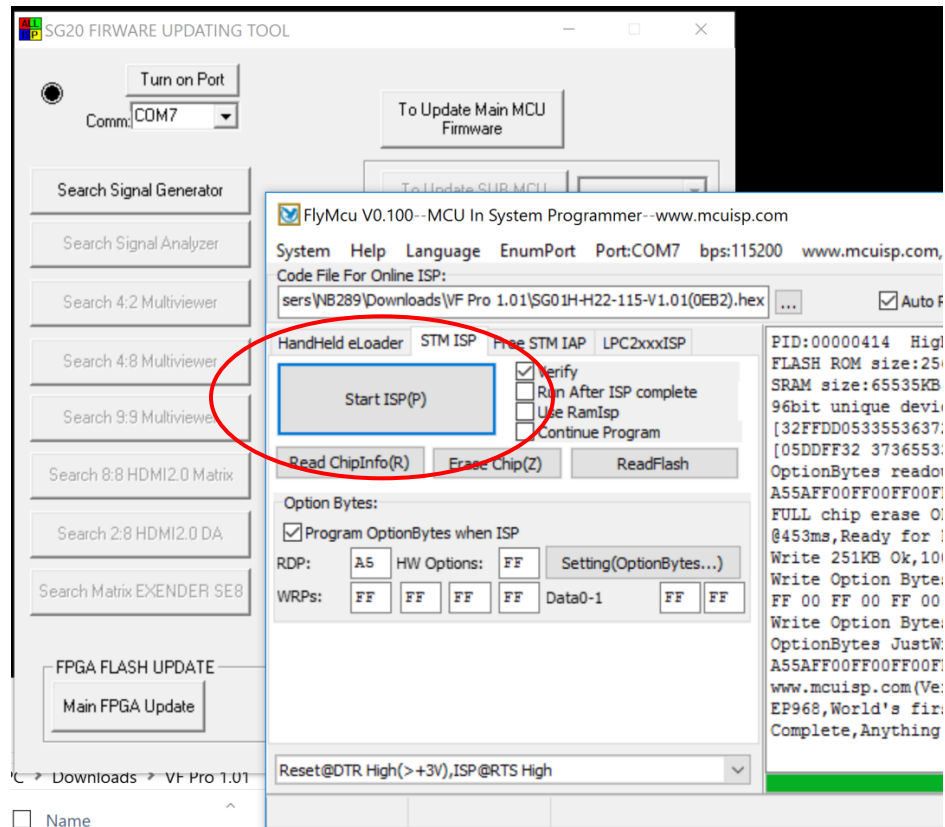
***Note:** If the FlyMcu screen (shown on next page) doesn't open automatically after clicking OK on the popup dialog, just open the “FlyMcu.exe” file manually, from the FlyMcu folder.*

4. On the FlyMcu screen (shown below), select the “**STM ISP(P)**” tab.
5. Click the “...” browse button to select the “**SG01H-H22-115-V1.11(3F7A).hex**” file (be sure to navigate to your extracted VF Pro 1.11 folder).



- Click the “**Start ISP(P)**” button (as indicated below).

***Caution:** Do not interrupt power or USB connection to the VideoForge PRO during this process.*



- After a few minutes, the green progress bar will stop and the message “**Complete, Anything OK!!!**” will appear.
- Close the firmware updating software.
- Power cycle the VideoForge PRO. [IMPORTANT]**

## After VideoForge PRO Power Cycle

Check that:

- VideoForge PRO splash screen is correct.
- Firmware version is correct on LCD screen (Rev1.07).
- Test pattern thumbnails on the VideoForge PRO screen match the patterns output to the external display via HDMI.

**Update Complete!**



## Legal Notices

Portrait Displays logos are trademarks or registered trademarks of Portrait Displays, Inc. in the United States or other countries.

All other trademarks and registered trademarks are the property of their respective owners in the United States or other countries.

All rights reserved.

## About / Contact

### About Portrait Displays

Portrait Displays, Inc., since 1993, is a leading application software provider (ASP) for PC, smartphone, and tablet displays. The Portrait Displays team now includes **SpectraCal**, the world's leading provider of video display calibration software. The combined companies offer value-added, feature-rich solutions to both OEM display manufacturers and end users seeking improved accuracy and manageability of their displays.

Portrait Displays, an Intel Capital Portfolio company, is a private corporation with headquarters in Pleasanton, California, USA with representatives in Europe, Taiwan, China, Japan, and Korea.

### Contact Us

SpectraCal

Submit a Technical Support Request:

<http://calman.spectracal.com/techsupport.html>

[spectracal.com](http://spectracal.com)

[sales@spectracal.com](mailto:sales@spectracal.com)

+1-925-227-2700

**PORTRAIT  
DISPLAYS**

Portrait Displays, Inc.

6663 Owens Drive

Pleasanton, CA 94588 USA

[portrait.com](http://portrait.com)